



T4600 Series Headlamp Tester



The new Technique T4600 series of headlamp testing machines are technically advanced, easy to use and set the standard for this type of equipment.

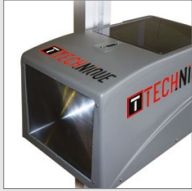
The essence of any good headlamp test machine is to have high-quality optics that produce a clearly defined image, combined with an effective system for ensuring accurate alignment to a headlamp and the ability to maintain this to a high standard of performance. Any headlamp tester destined for use within an MOT &ATL installation must conform to VOSA's '2018 Specification'. This means that it must be able to assess the performance of all current types of vehicle headlamp and possess a current Certificate of Conformity.

The stylish and ergonomic design is not only durable, reliable and stable but the quality build of the T4600 range enables unparalleled performance for garages and MOT test stations, especially when assessing or setting both car and CV headlamps and represents outstanding value for money. Investing in Technique equipment, which is backed by excellent local technical service support, provides peace of mind for both you and your customers.



BALANCED OPTICAL HEAD

An internal counterweight allows the optical head to be moved on the column with ease making positioning simple.



ADVANCED FRESNEL LENS

Key to the T4600 performance is the Fresnel lens, which collects maximum light and provides a high-quality image on the screen, it also permits a wide focusing range of 200mm to 800mm and is lighter and less prone to damage than a traditional glass lens.



NEW GENERATION LINEAR LENS

Aligning the headlamp tester optical head to the vehicle driveline is a vital requirement for accurate headlamp assessment and setting. By using a new generation 'linear laser', the T4600 laser projects a bright red light beam line onto the vehicle, which can be easily inspected for positioning.



ADVANCED ELECTRONIC VERSION

The advanced electronic models have a sensing system surrounding the lens that optimises the position of the optical head in front of the vehicle headlamp. Guidance on the movement of the tester head is displayed on an LCD read-out.

A unique and patented sensor array on the measurement screen provides information to the LCD display illustrating headlamp beam angle as an actual percentage to two decimal places. The sensors are extremely accurate and very sensitive, although regulations do not yet allow this type of technique to be used for assessment during an MOT test, it can be employed very effectively when setting a headlamp since it helps remove operator 'guesswork'. The sensors also provide graphical information about beam brightness and glare and main beam and fog lamps can also be checked and set.



PRINTER CONNECTIVITY

The T4610 and T4610C can download data to a computer to allow printing, or be supplied with Bluetooth connectivity to a suitable separate printer.

TECHNICAL SEPECIFICATIONS


	T4600	T4600V	T4600W	T4610	T4610C	T4610V
Fresnel Lens	✓	✓	✓	✓	✓	✓
Hi Performance Laser Alignment	✓	✓	✓	✓	✓	✓
Robust Extruded Column	✓	✓	✓	✓	✓	✓
Trolley Mounted			✓			
Rail Mounted	✓	✓		✓	✓	✓
3m Rail Kit	✓			✓		
4m Rail Kit		✓			✓	✓
Counter-weighted Optical Head	✓	✓	✓	✓	✓	✓
200mm to 800mm Focussing Range	✓	✓	✓	✓	✓	✓
LCD Display				✓	✓	✓
Electronic Position Sensing				✓	✓	✓
Electronic Beam Assessment				✓	✓	✓
Readout In Actual Values				✓	✓	✓
Printer Available				✓	✓	✓
Suitable For HGV's					✓	



BULLWORTHY

THE GARAGE EQUIPMENT SPECIALISTS

 (01295) 768 373

 enquiries@bullworthy.co.uk

 www.bullworthy.co.uk