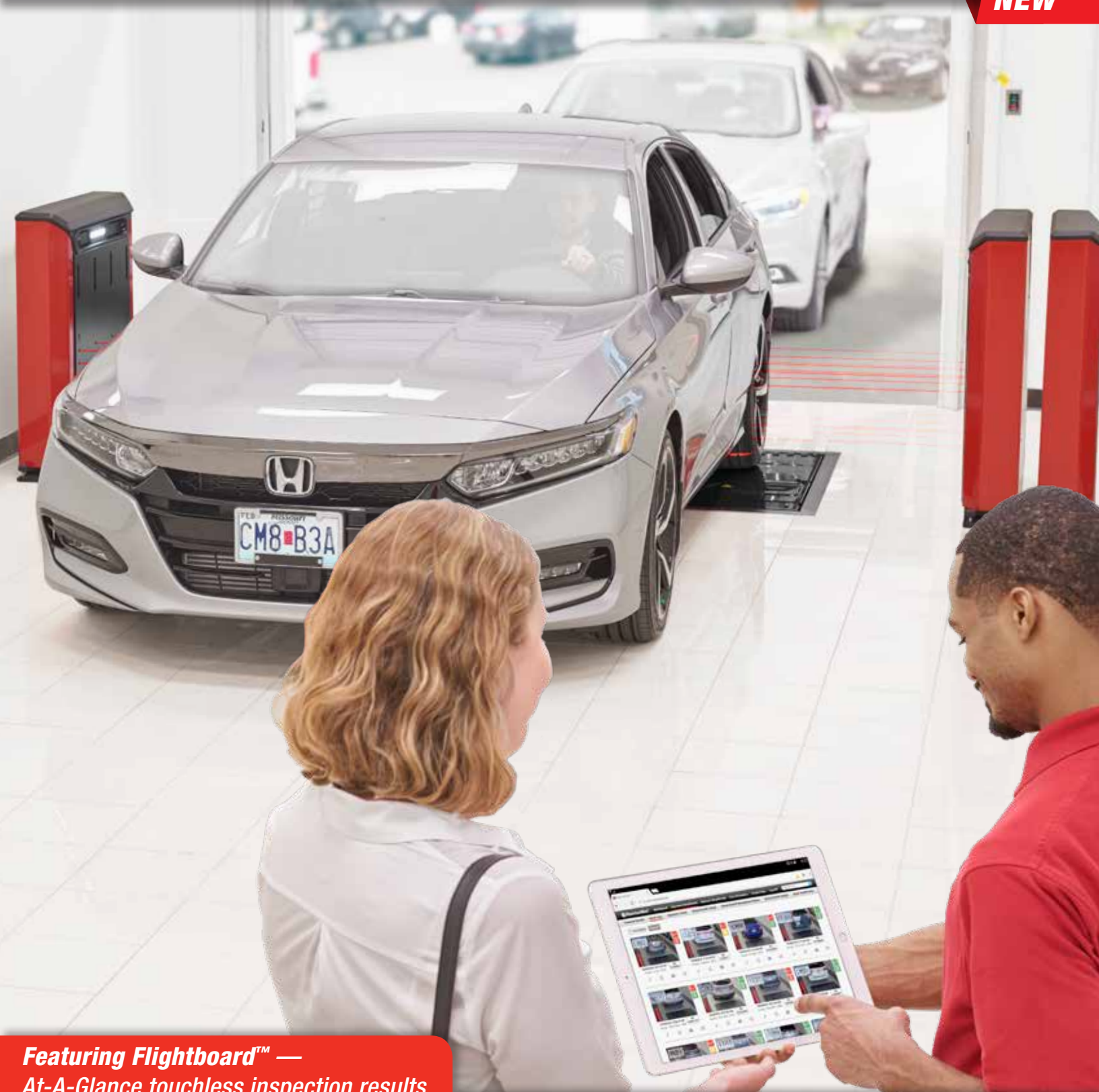


Quick Check Drive® Inspection

Autonomous Alignment and Tread Depth for the Service Drive

NEW



Featuring Flightboard™ —
At-A-Glance touchless inspection results

Vehicle



Toyota : RAV4 4X2 : 2015

MO AH1Y9C

11:43

Wheel Alignment



Recommend a comprehensive alignment check

May require Safety System Alignment®

Front Tires



Rear Tires



Unmanned Inspection At-A-Glance

PATENTED

Automatic Alignment Results

- ✓ Quick Check Drive® — Touchless total toe and individual camber
- ✓ Quick Tread Edge® — Measures tread depth, analyzes data on-site, and instantly displays results
- ✓ Boost most profitable undercar services
- ✓ No additional labor required

PLEASE
DRIVE
FORWARD

NO STOPPING



NO LABOR



NO DATA ENTRY



Quick Check Drive® —
A powerful autonomous
alignment inspection system!

Quick Tread Edge® —
Touchless tread depth with
edge wear detection!

OPTIONAL
External Camera



PATENT PENDING

**Vehicle Identification —
Automatically determine OEM
specs on most vehicles**



Optional Body Camera Feature



Automatic body photos
protect against mistaken
damage claims



Get Results Your Way

Flightboard™ — Customers see findings live

HARRISON Auto Mall		Welcome to Harrison Auto Mall		Vehicle	Wheel Alignment	Front Tires	Rear Tires
	Toyota : RAV4 4X2 : 2015	MO AH1Y9C	11:43		Recommend a comprehensive alignment check ⚠️ May require Safety System Alignment*		
	GMC : Sierra 4X4 1500... : 2014	MO 0PW145	11:36		All measured angles passed		
	Subaru : Legacy Outback : 2016	IL Z956919	11:32		Further selection required		
	Toyota : Prius : 2008	IL AU54501	11:29		Recommend a comprehensive alignment check ⚠️ May require Safety System Alignment*		
	Jeep : Patriot MK 4X4 : 2017	MO DN0Z7G	11:24		All measured angles passed		
	Chevrolet : S10 Pickup 4X4 ... : 1998	MO 0CA823	11:21		Recommend a comprehensive alignment check		
	Chevrolet : Silverado 4X4 T800... : 2007	MO 78J244	11:19		All measured angles passed		

Shop Results — View and present inspection results from any PC with internet connection



Push Reports — Daily delivery of inspection rates, opportunities, alignment numbers, and conversions by email and text



External identification camera sold separately.

Selling and Reporting Tools

Powered by  **HunterNet**[®]

Increase your productivity and revenue with HunterNet[®] selling tools.

- ✓ Display and view results automatically
- ✓ Present and email inspection details digitally
- ✓ Inform customers with photos and videos



Measure inspection performance and pinpoint improvement opportunities with reporting tools.

✓ **Push Reports** **NEW!**

- Automatic performance snapshots
- View inspection rates and opportunities
- Measure alignment numbers and conversions
- Daily delivery by email and text



✓ **Track Statistics and Generate Reports**

- Closely analyze inspection rates and opportunities
- Analyze Quick Check[®] results and failure rates for specific test types

NEW Partner Integration

- ✓ Integrate with leading industry software
- ✓ Secure more service authorizations
- ✓ Provide a better customer experience

Hunter Partners

auto**point**

DealerTire[®]

Auto**Loop**
Retention Through Engagement

frogdata

DEALER-FX

DataClover

Auto **Serve** 1

Auto**Vitals**[®]

BOLT ON[®]
TECHNOLOGY

TCS
an ARJ company

in
MarketNOW

Code Assist by
IDENTIFIX[®]
FIND AND FIX FASTER

... and more!

AutoPoint sample phone interface



Autonomous Alignment Audit

Compact and Powerful

- ✓ Laser and optical technology provides unmatched accuracy
- ✓ System distinguishes tire from other elements of the vehicle
- ✓ Hunter's complete OEM specification database saves time and avoids comebacks

Four High-Definition Cameras

- ✓ License plate images identify vehicle
- ✓ Optional: 40 or more still images captured as vehicle drives past to defend against false damage claims

8 Cameras and 32 Laser Sensors

- ✓ Accurately inspect camber and total toe
- ✓ 16 measurements taken to increase accuracy
- ✓ Repeatable results

Intelligent and Fast

- ✓ Scan a new vehicles every 3 to 5 seconds
- ✓ Only activates when vehicle is present

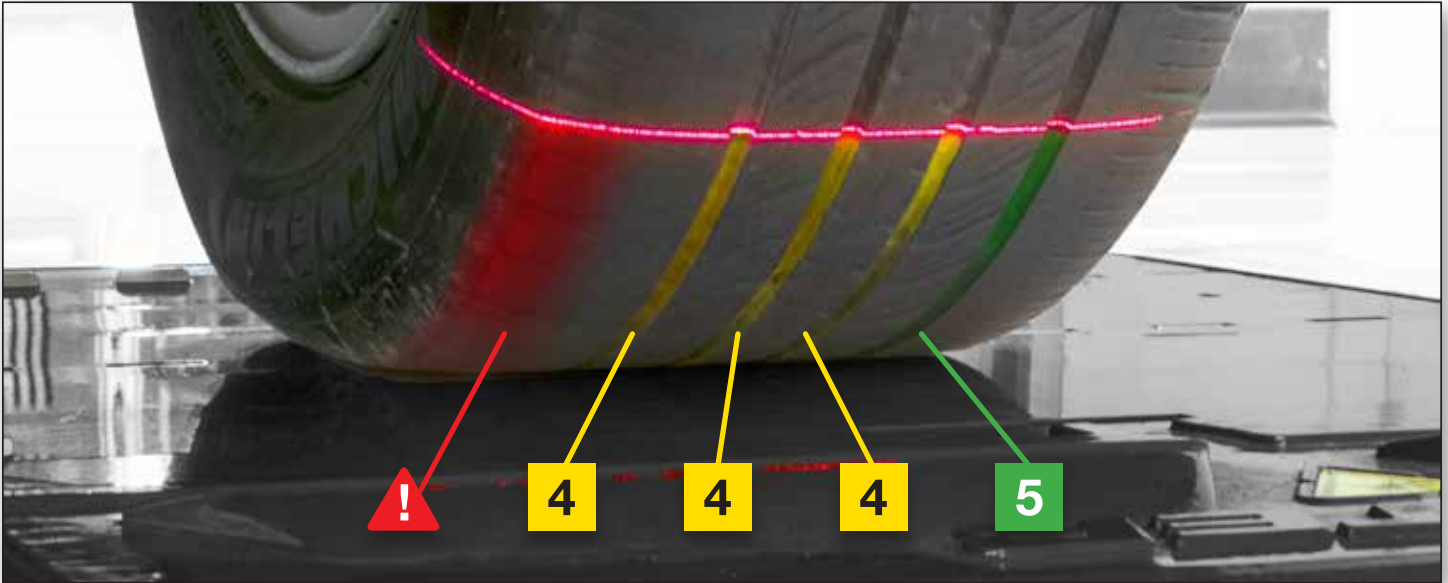


How It Works... *As the vehicle drives through, cameras measure distances to the tire to calculate total toe and individual camber.*

Hunter's patented system acquires up to 16 results. Measurement outliers are removed and the other results are averaged to provide utmost accuracy.



Autonomous Tread and Edge Wear Measurement



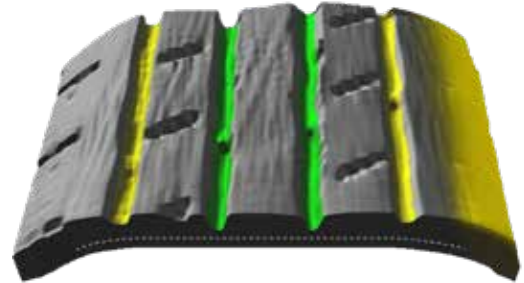
Quick Tread Edge® — Hunter's tread depth unit with tire edge wear detection — automatically measures the tread depth of each tire from edge to edge in seconds.

- ✓ Captures accurate tread information on all vehicle traffic
- ✓ Increases accuracy by eliminating guesswork and manual inspection
- ✓ Detects tread grooves and reports up to six measurements per tire
- ✓ Results sent to console and graphically shown for customer
- ✓ Built with corrosion-resistant stainless steel, includes self-cleaning air knife

Added Benefits

- ✓ Flush-mounted configuration integrates seamlessly with Quick Check Drive®
- ✓ Stores tread depth records to create customer history for use in marketing efforts
- ✓ No recurring monthly charge

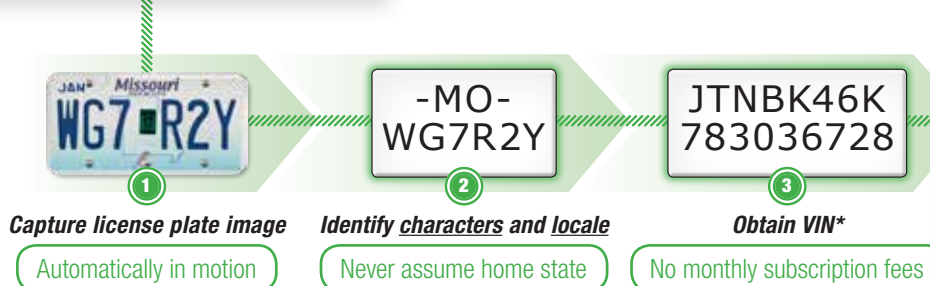
3 5 5 4 !



PATENT PENDING

Automatic Vehicle Identification

Standard, built-in cameras capture vehicle's license plate as it enters or exits the Quick Check Drive® unit's field of vision. Automatically determine OEM specs on most vehicles.



Powered by:



Automatically determine vehicle year, make, model and alignment specifications

* Internet connection required, powered by CARFAX™

OPTIONAL

External Camera available for Challenging Situations

Hunter's external vehicle identification camera captures better quality photos — especially on challenging license plate designs and special character layouts.*

- ✓ External camera solves difficult install situations such as low lighting, daylight glare, and field of view obstacles
- ✓ Flexible camera installation options include indoor or outdoor placement, ceiling- or wall-mounted, and center or off-center locations



Standard camera resolution



Optional Quick ID™ camera resolution



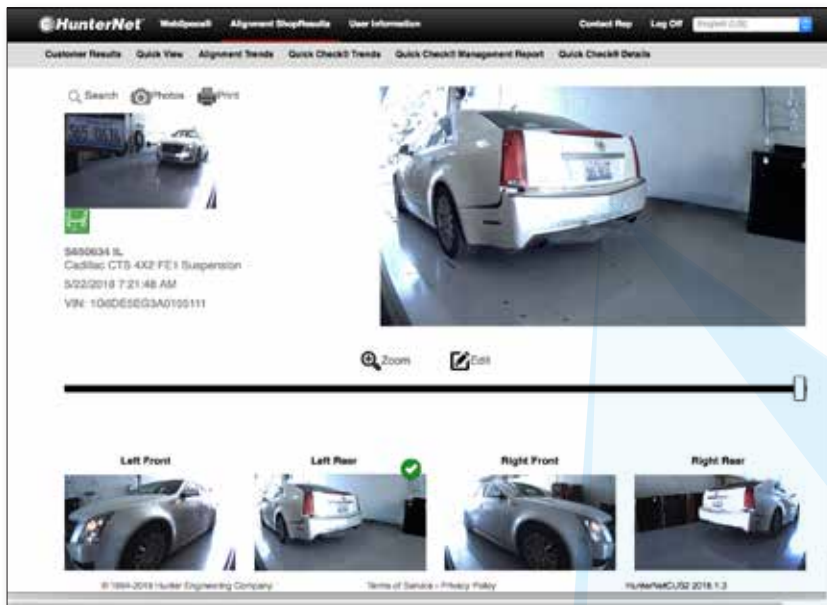
- ✓ Identify characters better, more often
- ✓ Special characters are more recognizable at higher resolution
- ✓ Distinguish characters from plate design more easily

* See form 7604-T for a map of states with challenging license plates.

OPTIONAL

Automatic Body Image Capture

Using the same built-in high-definition cameras, the body damage cameras enable your dealership to capture 40 or more images per vehicle in the same time it takes to check wheel alignment.



- ✓ Save your dealership thousands of dollars in false vehicle-damage claims
- ✓ Immediate access to your body damage camera images — no need to contact a third-party surveillance company and wait for the images
- ✓ Camera location optimal to capture body images

Use HunterNet® to quickly review vehicle images

- ✓ Intuitive body damage camera interface displays vehicle information and date of service
- ✓ Four cameras capture an average of 10 images each
- ✓ 15-day image storage standard
- ✓ Premium 90-day storage package available



Did you know? Body damage cameras can save thousands of dollars per month on false damage claims. It is not uncommon for customers to be “mistaken” about when damage occurs.

Choosing the Right Alignment Inspection System

Hunter's Quick Check Drive® is the industry's first truly unmanned and repeatable touchless alignment check solution.

- ✓ Quick Check Drive® uses a total of 32 lasers and 8 cameras for unmatched accuracy
- ✓ Measure both camber and total toe to greatly increase alignment opportunities
- ✓ Integrated license plate cameras automatically identifies vehicle and alignment specifications



Hunter Quick Check Drive®

VS.



Competitor

Fully-Autonomous System

- Total toe measurement
AUTOMATIC
- Camber measurement
AUTOMATIC
- Automatic plate-to-spec
INCLUDED
- Body damage cameras
OPTIONAL
- Error recognition
AUTOMATIC
- Service and support
400+ Field Reps BACKED BY HUNTER
- Proven Accuracy
from Alignment Leader

Labor Required System

- Toe measurement
AUTOMATIC
- Camber measurement
- Automatic plate-to-specs
- Body damage cameras
- Error recognition
- Service and support
- Proven Accuracy



Did you know? Using a single set of measurements can lead to inaccurate results — meaning misinformed customers and missed service opportunities.

Choosing the Right Tread Inspection System

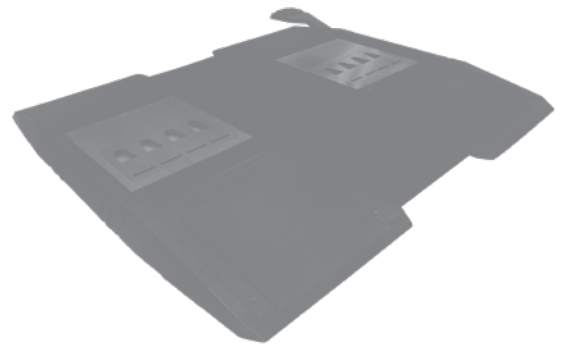
Hunter's Quick Tread Edge™ provides more information in less time with greater reliability than any other drive over tread depth system.

- ✓ Quick Tread Edge™ provides unmatched accuracy and clarity of every tire from edge-to-edge
- ✓ Unsurpassed environmental protection means your Quick Tread Edge™ works, rain or shine
- ✓ Produces stunning 3D images of every tire, every time with no stopping or labor required



Hunter Quick Tread Edge®

VS.



Competitor

Edge-to-Edge System

- Automatic tread scan
3D tire scan, edge-to-edge
- Tread wear data collection
280,000+ data points
- Accurate alignment check option
Compatible with Quick Check Drive®
- Weather-resistant protection
Tested in real-world conditions
- Durable construction
Stainless steel
- Service and Support
400+ Field Reps BACKED BY HUNTER
- No monthly charges

Traditional System

- Automatic tread scan
Single line scan
- Tread wear data collection
400+ data points
- Accurate alignment check option
- Weather-resistant protection
- Durable construction
Plastic composite



Did you know? In a recent 25,000 vehicle study, 51% of all vehicles had no irregular tire wear, but needed an alignment. Only 10% had irregular wear and needed an alignment.

Configurations for Every Shop*

Integrate Quick Check Drive® with flush-mounted Quick Tread Edge® to build the most profitable unmanned inspection system.

Quick Tread Edge® can be installed individually as a surface- or flush-mounted unit.



Flush-Mount Quick Tread Edge® (with alternate WU572 console)

- ✓ Smooth approach
- ✓ Zero obstructions
- ✓ Compatible with Quick Check Drive®



Surface-Mount Quick Tread Edge® (with standard wall-mounted console)

- ✓ Low stack height (3.4 in.)
- ✓ Simple installation
- ✓ Extended and angled kits available

Site Considerations:

- ✓ Hardwired internet connection required for Quick Check Drive®
- ✓ Weather protection recommended as warranted by local conditions
- ✓ Impact protection recommended as warranted by lane layout
- ✓ Body cameras and vehicle ID performance require uniform and reasonably bright lane lighting



Please see your Hunter Sales Representative for details

Be sure to check out other Hunter literature for more quality products from Hunter Engineering.

Quick ID is a trademark of Hunter Engineering Company.

Quick Check, Quick Check Drive, Quick Tread, Quick Tread Edge, HunterNet, and WinAlign are registered trademarks of Hunter Engineering Company.



HUNTER
Engineering Company.

www.hunter.com