



Compatibility (Up to)



Description

The FRU 20 UK Mobile Heavy Vehicle Brake Tester is designed to check the brake condition of vehicles with a maximum axle load of up to 20 T per axle. The FRU 20 UK Mobile is a full DVSA Spec commercial brake tester with access to DVSA/DTP database which is continually updated.

The fact the unit is mobile makes it a perfect solution when civil works are not an option.

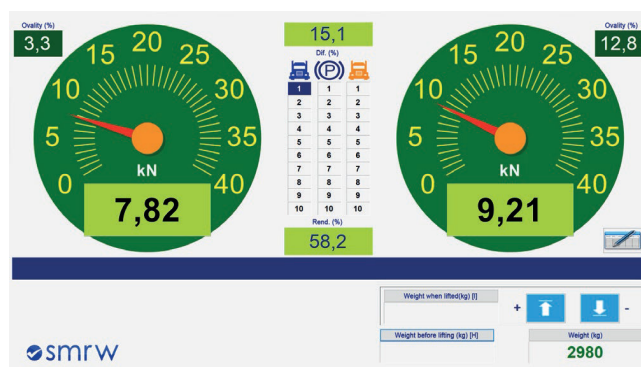
The most significant information obtained is:

- ✔ Braking force on manual and pedal brakes
- ✔ Rolling resistance
- ✔ Ovality and weight measurement optional*
- ✔ Hand caliper and tachometer optional*
- ✔ Braking performance

Standard Equipment

- ✔ Mobile Brake Tester unit
- ✔ Tablet for Remote connection
- ✔ 4 x Ramps (Mounted to unit)

Software



Technical data and Dimensions

Maximum Test Capacity	20 Ton
Motor	2 x 11kW
Maximum Track Width	3100mm
Dimensions	4800mm(W) x 930mm(D) x 210mm(H)
Weight	1350kg
Power Requirements	63A 3ph + N + E, via commando plug
Roller Size	1350mm x 150mm
Control Method	Remote Tablet

