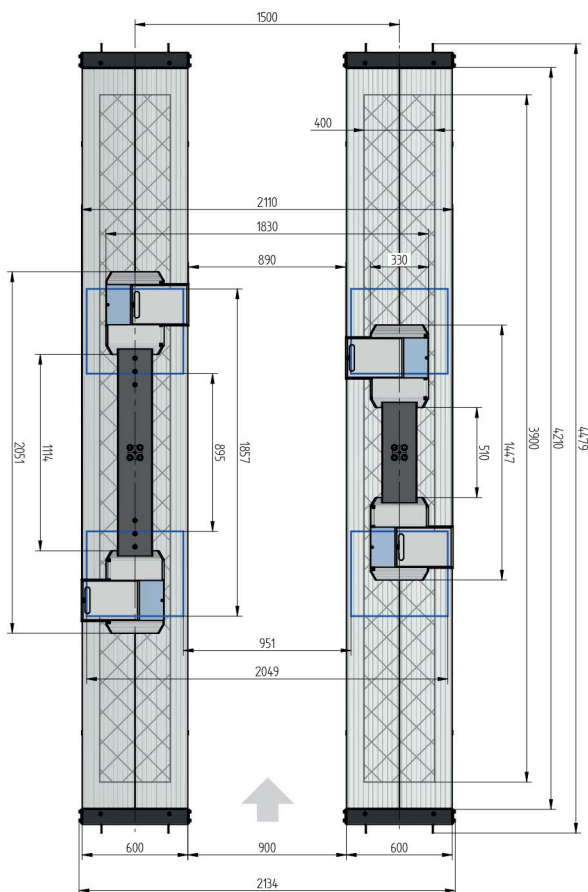
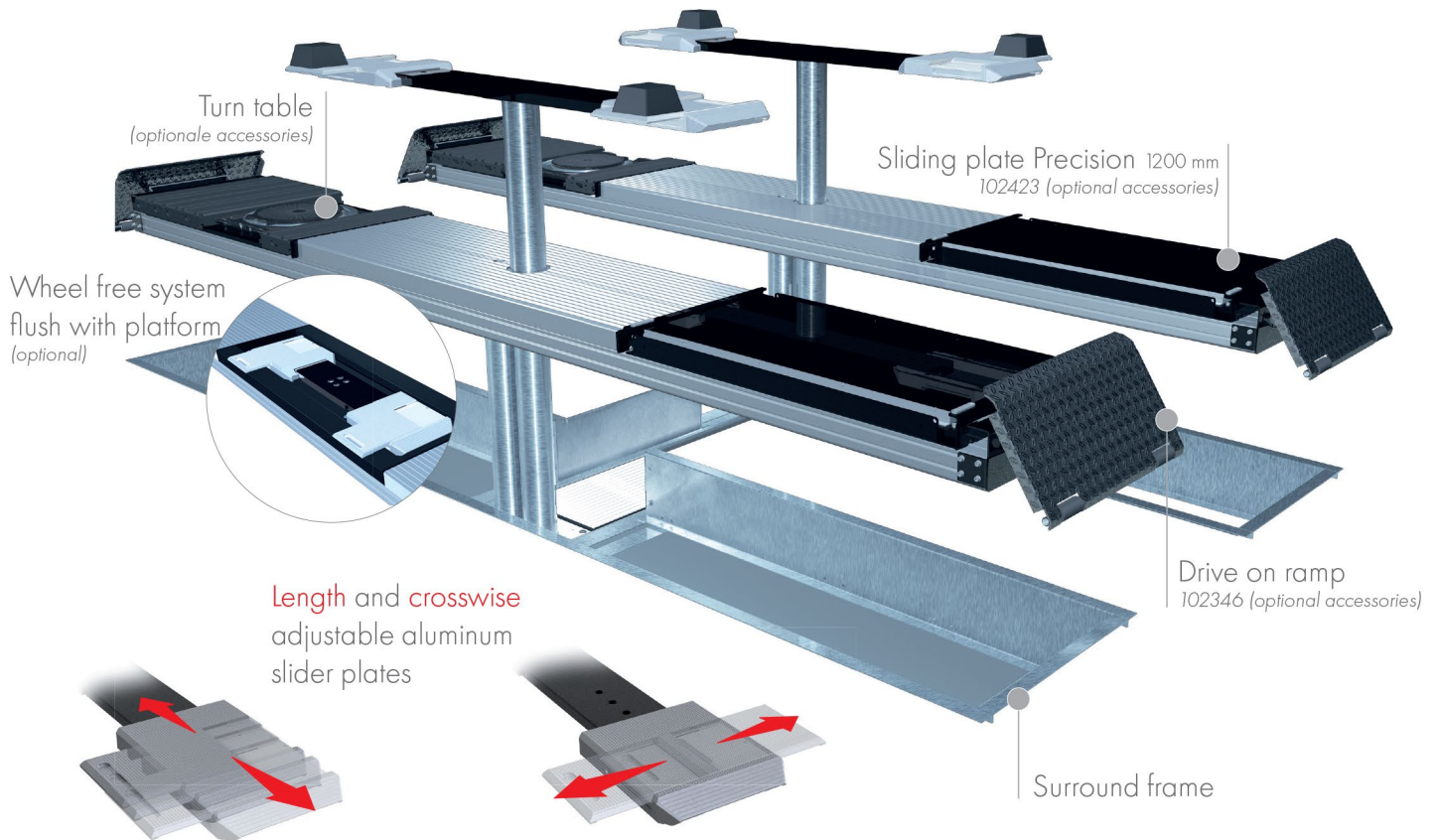


FLUSH MOUNTED



TECHNICAL DATA

capacity	3500 kg
wheel free lift	3500 kg
platform length	4400 mm
platform height	180 mm
drive over height wheel free unit	60 mm
piston diameter	123 mm
piston distance	1500 mm
motor output	3,0 kW
power connector	400 V/16 A
cable length to control	11 m
lifting time	≈ 35 sec.
lowering time	≈ 35 sec.

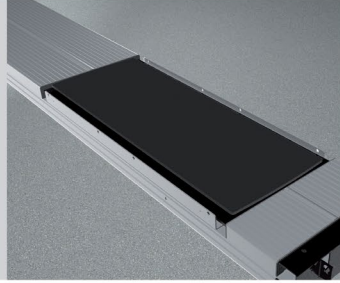
Platform support Alu Track 2.35 Duplo with platform notches for turn tables and sliding plates	105244
Platform support Alu Track 2.35 Duplo with platform notches for wheel free system flush with platform, turn tables and sliding plates	108892
Platform support Alu Track 2.35 Duplo with platform notches for wheel free system flush with platform	108036
Platform support Alu Track 2.35 Duplo	105336
Support Uni 2.35 plus	102640
Installation cassette STEEL 1500 mm	2190XX
Installation cassette STEEL 1500 mm galvanized	2191XX
Lifting unit oil 3,5 t Duplo 1500 mm - K pre-assembled in installation cassette	111599
Lifting unit oil 3,5 t Duplo 1500 mm - H packed in wooden box	111600
Lifting unit oil 3,5 t Duplo 1500 mm - K for wheel free system, pre-assembled in installation cassette	111601
Lifting unit oil 3,5 t Duplo 1500 mm - H for wheel free system, packed in wooden box	111602
Surround frame H 2-piston 4400 mm	102356

ACCESSORIES



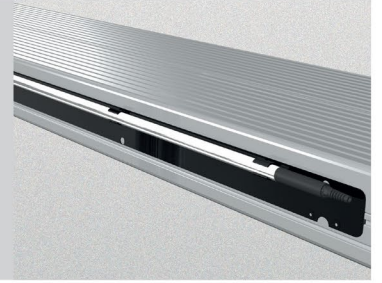
Drive on ramp

102346



Sliding plate

Precision 1 200 mm
102423



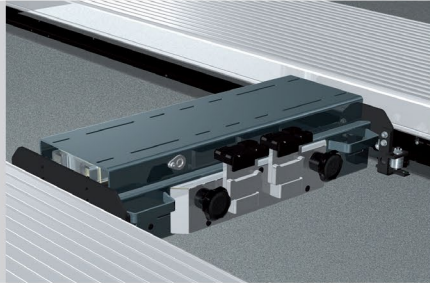
Lighting
LED

111598

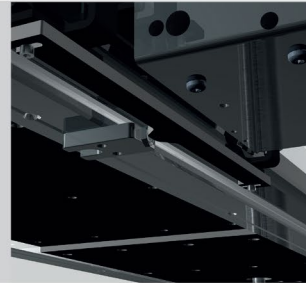


Slide rail

4400 mm
102374

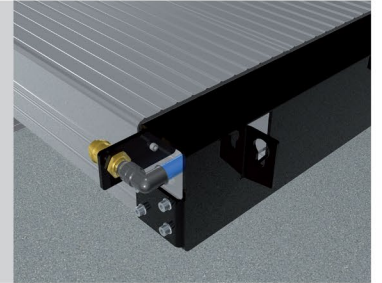


Axle lifter 2600 kg
pneumatic, without slide rails
105063



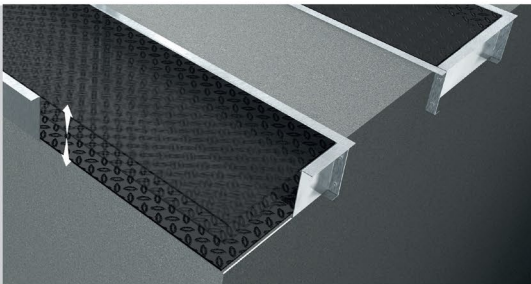
Position sensor
for axle lifter

102456



Compressed air supply

105617



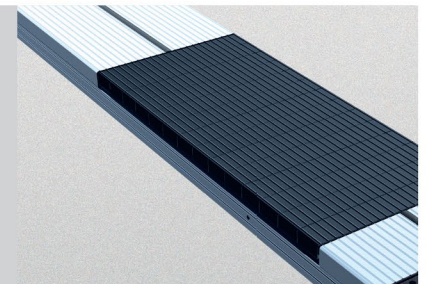
Autom. floor levelling system

2-piston Duplo 4400 mm
102363



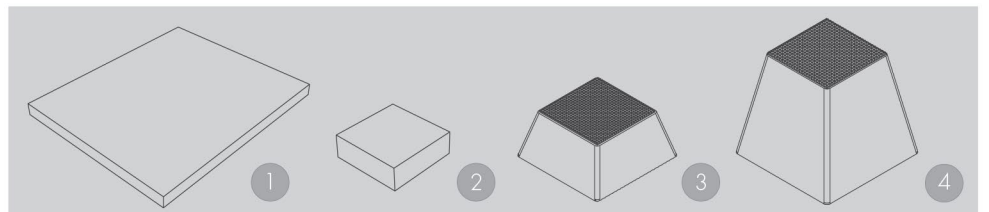
Wheel alignment supports

1350 mm 600 mm
102377 102381



Rubber elements

50 mm 100 mm 200 mm
111677 111678 111679



Rubber pads

1 | 290 x 335 x 20 mm | 2 | 120 x 120 x 40 mm
102275 | 102274

Rubber pads Pyramid

3 | 70 mm | 4 | 140 mm
102273 | 102291