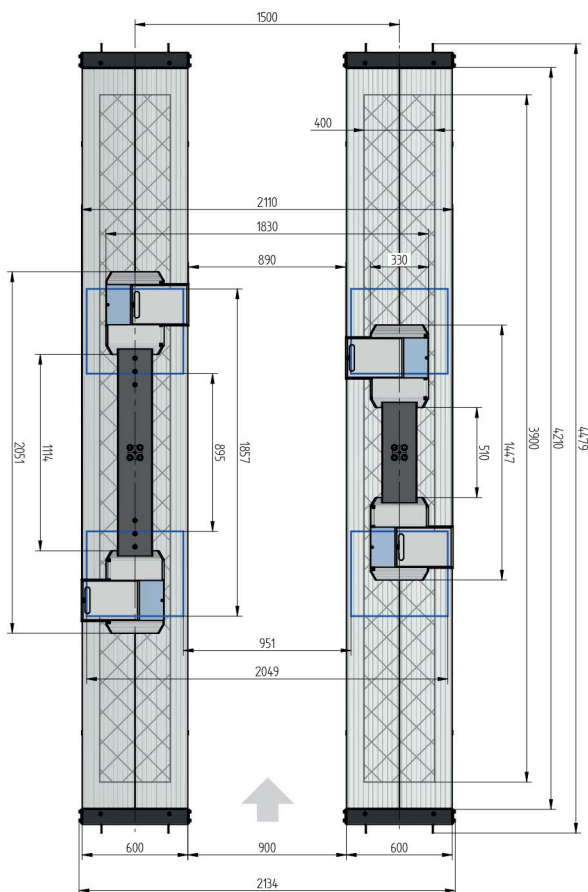
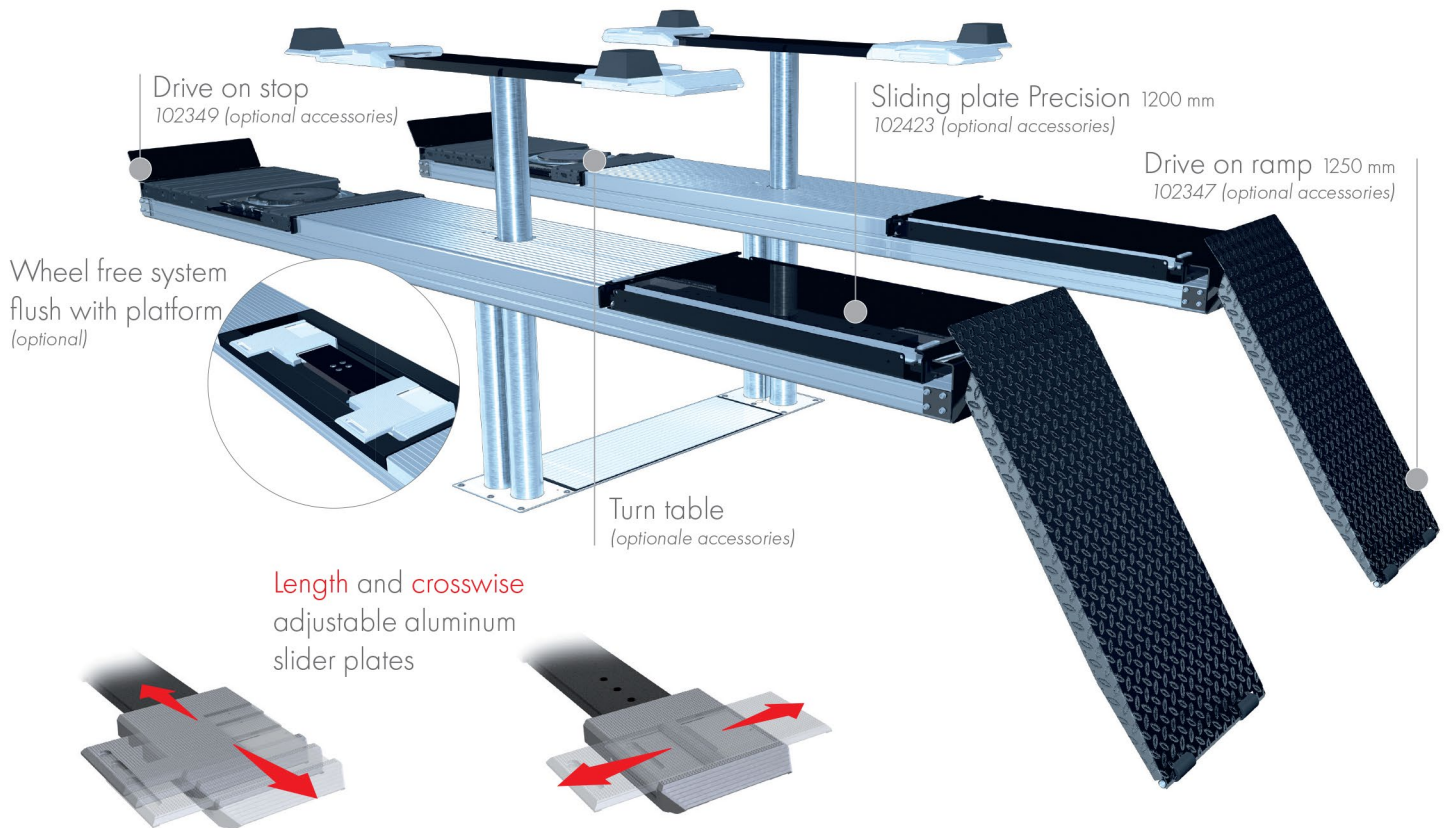


## SURFACE MOUNTED



## TECHNICAL DATA

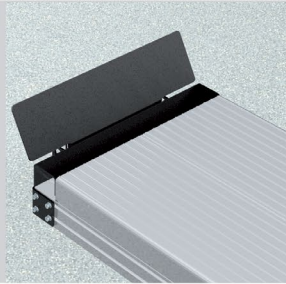
capacity	3500 kg
wheel free lift	3500 kg
effect. raise height platform	2008 mm
effect. raise height wheel free unit	1982 mm
platform length	4400 mm
platform height	180 mm
drive over height wheel free unit	60 mm
piston diameter	123 mm
piston distance	1500 mm
installation depth	2443 mm
motor output	3,0 kW
power connector	400 V/16 A
cable length to control	11 m
lifting time	≈ 35 sec.
lowering time	≈ 35 sec.

Platform support Alu Track 2.35 Duplo with platform notches for turn tables and sliding plates	105244
Platform support Alu Track 2.35 Duplo with platform notches for wheel free system flush with platform, turn tables and sliding plates	108892
Platform support Alu Track 2.35 Duplo with platform notches for wheel free system flush with platform	108036
Platform support Alu Track 2.35 Duplo	105336
Support Uni 2.35 plus	102640
Installation cassette STEEL 1500 mm	2190XX
Installation cassette STEEL 1500 mm galvanized	2191XX
Lifting unit oil 3,5 t Duplo 1500 mm - K pre-assembled in installation cassette	111599
Lifting unit oil 3,5 t Duplo 1500 mm - H packed in wooden box	111600
Lifting unit oil 3,5 t Duplo 1500 mm - K for wheel free system, pre-assembled in installation cassette	111601
Lifting unit oil 3,5 t Duplo 1500 mm - H for wheel free system, packed in wooden box	111602

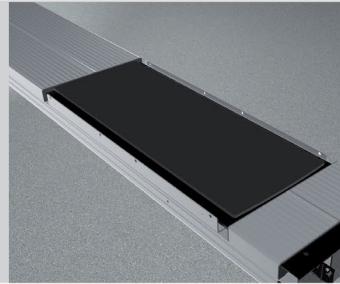
ACCESSORIES



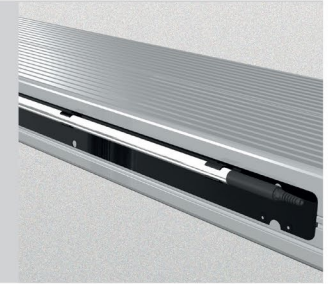
Drive on ramp  
1250 mm  
102347



Drive on stop  
102349



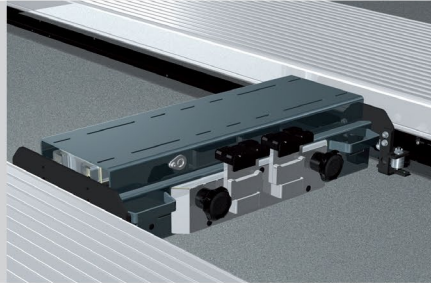
Sliding plate  
Precision 1200 mm  
102423



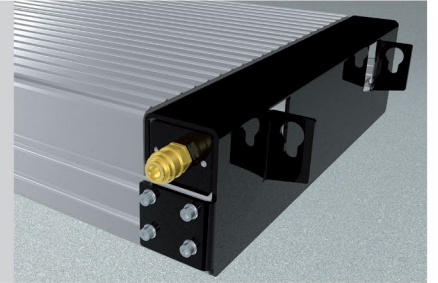
Lighting  
LED  
111598



Slide rail  
4400 mm  
102374



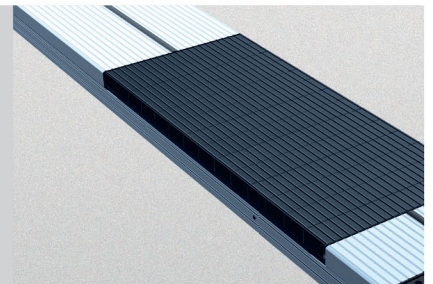
Axle lifter 2600 kg  
pneumatic, without slide rails  
105063



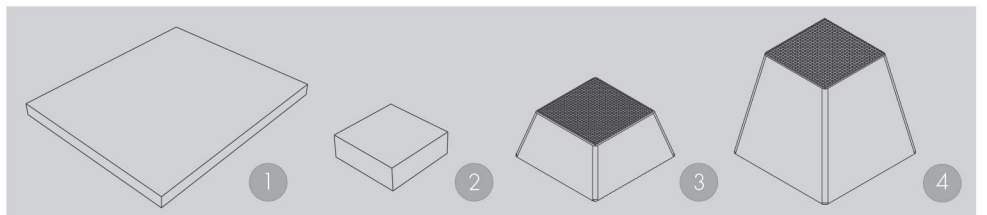
Compressed air supply  
102407



Wheel alignment supports  
1350 mm 600 mm  
102377 102381



Rubber elements 600 mm  
50 mm 100 mm 200 mm  
111677 111678 111679



Rubber pads

1 | 290 x 335 x 20 mm 102275  
2 | 120 x 120 x 40 mm 102274

Rubber pads Pyramid

3 | 70 mm 102273  
4 | 140 mm 102291