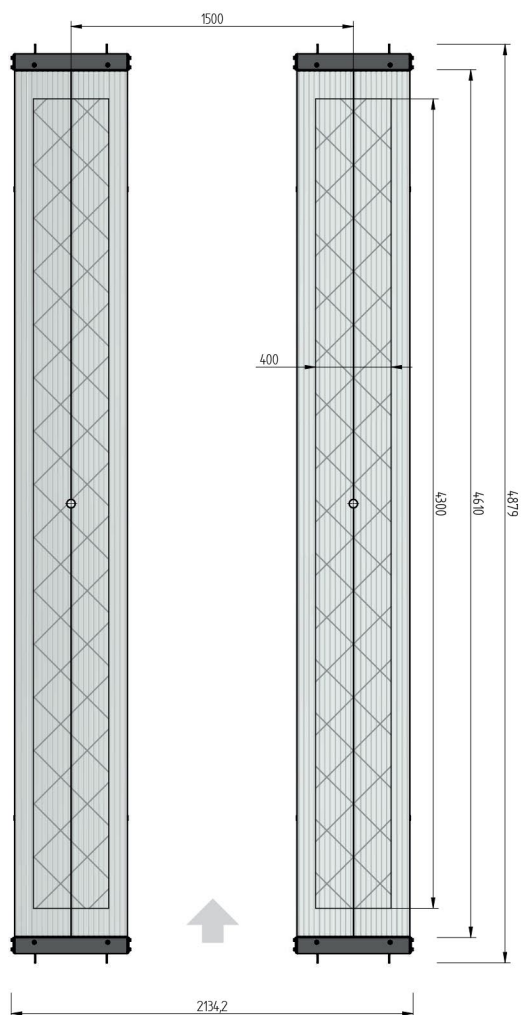
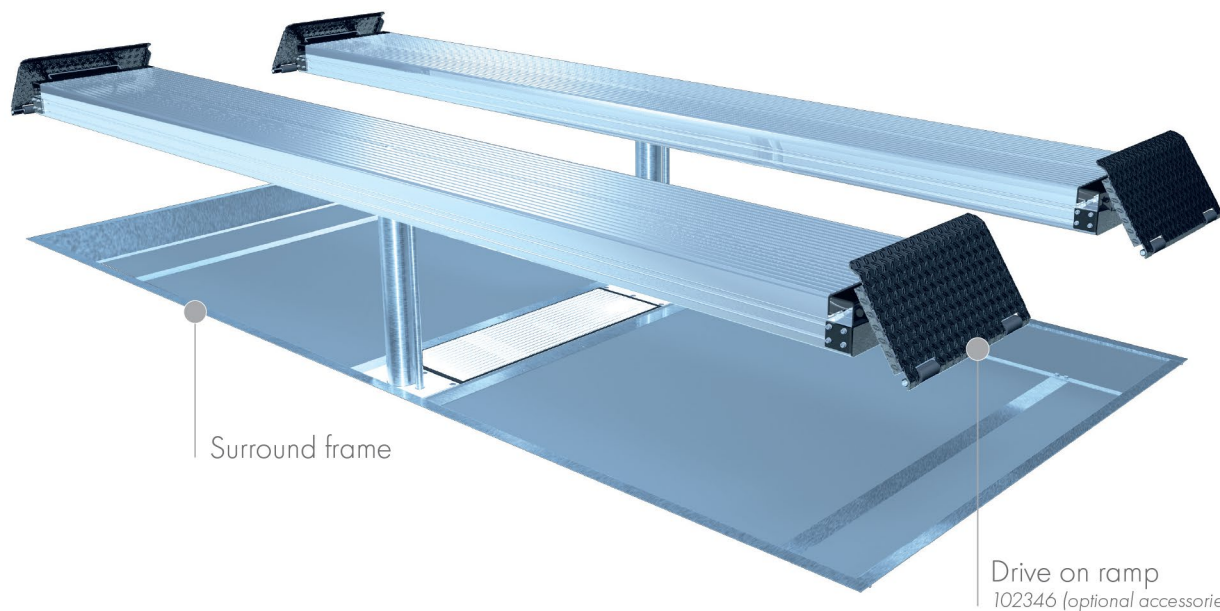


FLUSH MOUNTED



TECHNICAL DATA

capacity	5000 kg
platform length	4800 mm
platform height	180 mm
piston diameter	123 mm
piston distance	1500 mm
motor output	3,0 kW
power connector	400 V/16 A
cable length to control	11 m
lifting time	≈ 35 sec.
lowering time	≈ 35 sec.

Platform support Alu Track 2.50	104980
Installation cassettes STEEL 1500 mm	2030XX
Installation cassettes STEEL 1500 mm galvanized	2031XX
Lifting unit oil 5,0 t 1500 mm - K pre-assembled in installation cassette	110204
Lifting unit oil 5,0 t 1500 mm - H packed in wooden box	110205
Surround frame Rectangle 2-piston 4800 mm	106187

ACCESSORIES



Drive on ramp

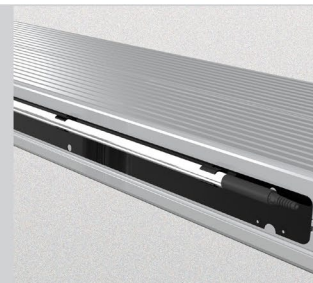
102346



Slide rail

4800 mm

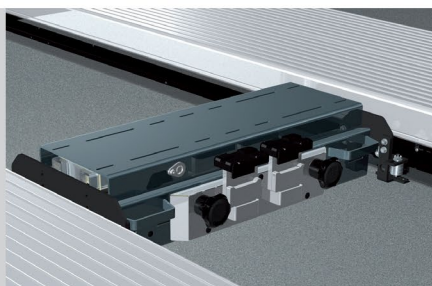
102375



Lighting

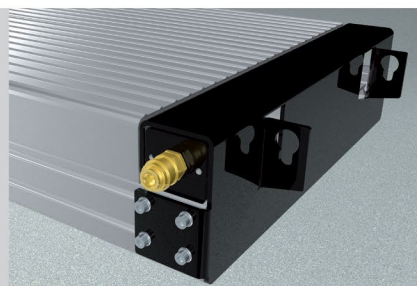
LED

102394



Axle lifter 2600 kg
pneumatic, without slide rails

105063



Compressed air supply

102407