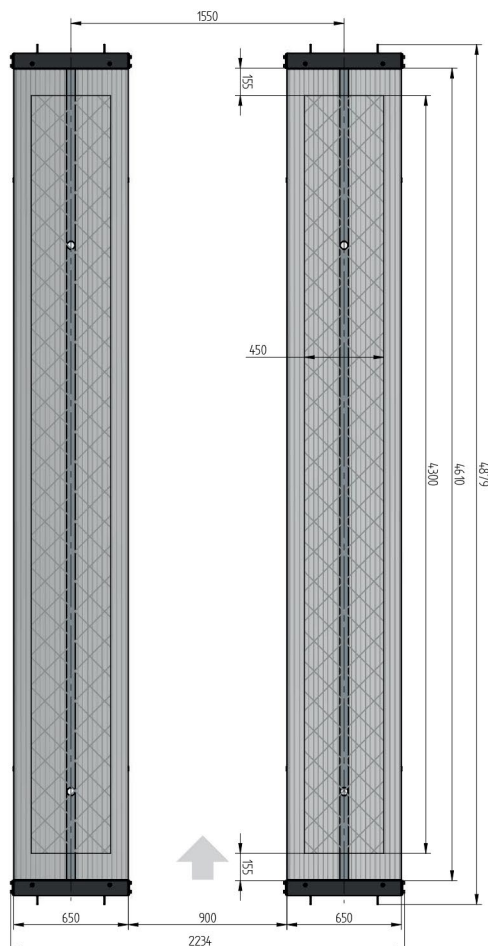
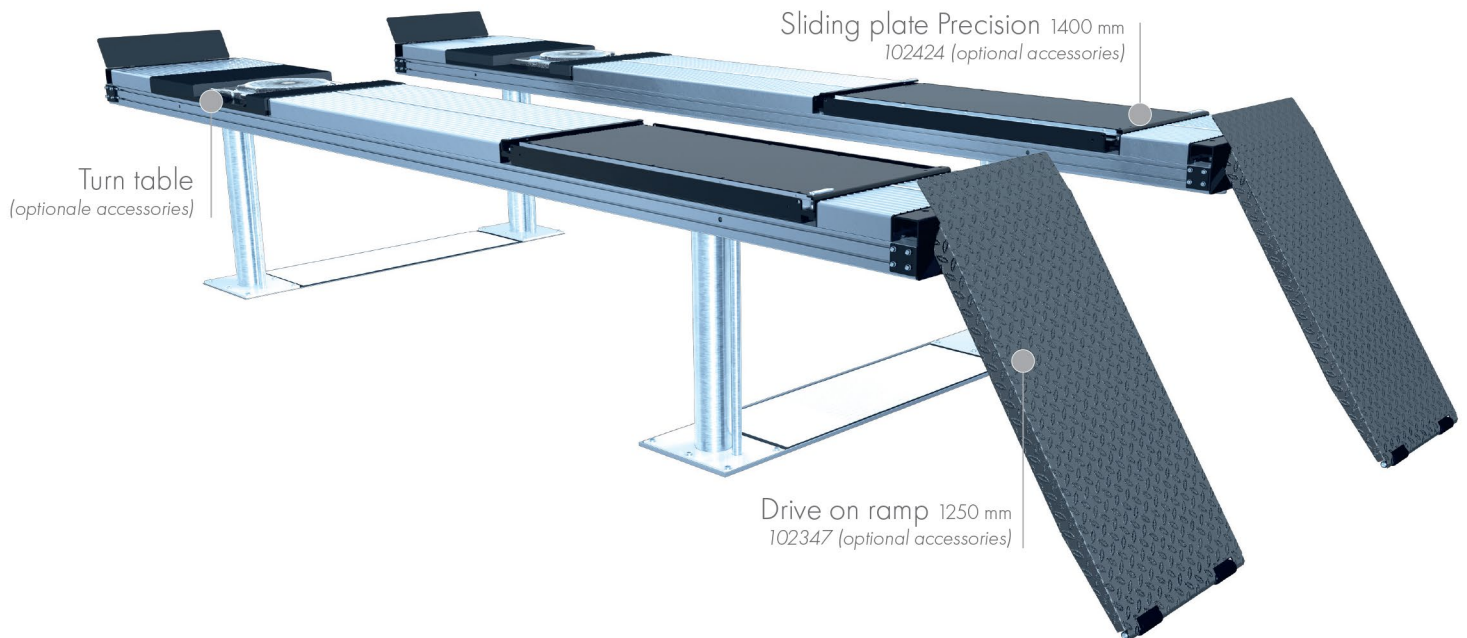


SURFACE MOUNTED



TECHNICAL DATA

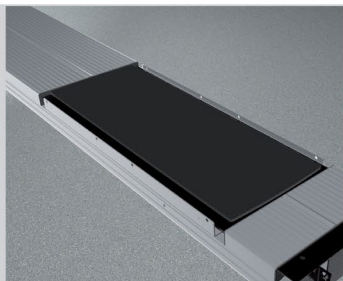
capacity	4000 kg
effect. raise height	2008 mm
platform length	4800 mm
platform height	180 mm
piston diameter	123 mm
piston distance	1550 mm
installation depth	2443 mm
motor output	3,0 kW
power connector	400 V/16 A
cable length to control	11 m
lifting time	≈ 35 sec.
lowering time	≈ 35 sec.

Platform support Alu Track 4.40	108608
with platform notches for turn tables and sliding plates	
Platform support Alu Track 4.40	108607
with platform notches for joint play tester	
Platform support Alu Track 4.40	108606
Installation cassettes STEEL 1550 mm	2420XX
Installation cassettes STEEL 1550 mm galvanized	2421XX
Lifting unit oil 4,0 t 1550 mm - K	111607
pre-assembled in installation cassette	
Lifting unit oil 4,0 t 1550 mm - H	111608
packed in wooden box	

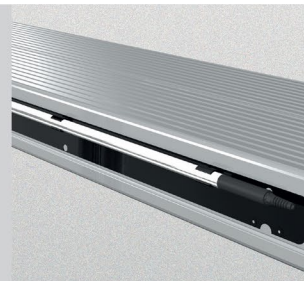
ACCESSORIES



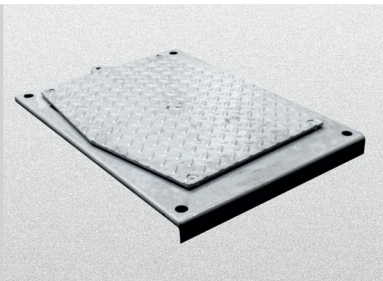
Drive on ramp
1250 mm
102347



Sliding plate
Precision 1400 mm
102424



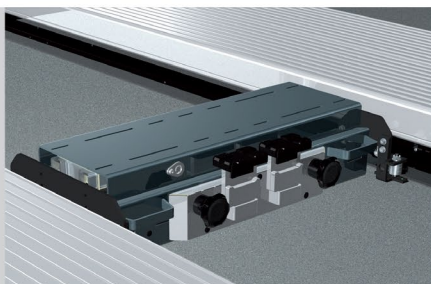
Lighting
LED
111598



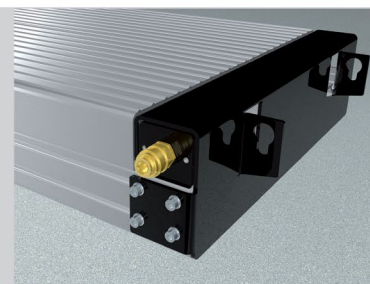
Joint play tester
108613



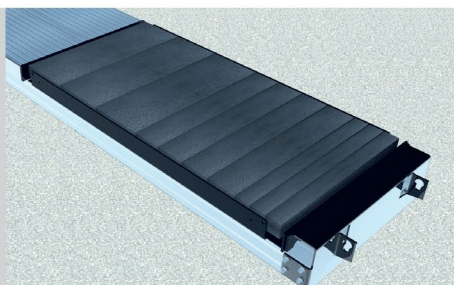
Slide rail
4800 mm
102375



Axle lifter 2600 kg
pneumatic, without slide rails
105063



Compressed air supply
102407



Rubber elements
50 mm 100 mm 200 mm
111677 111678 111679