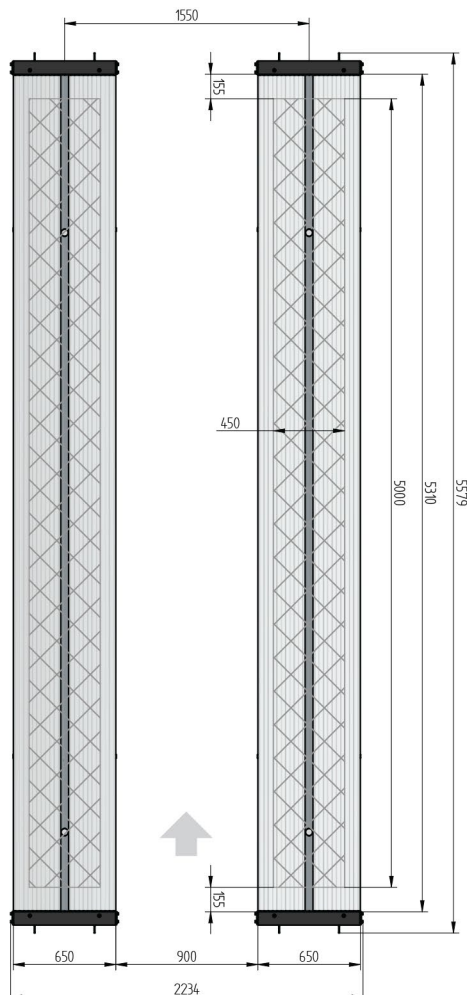
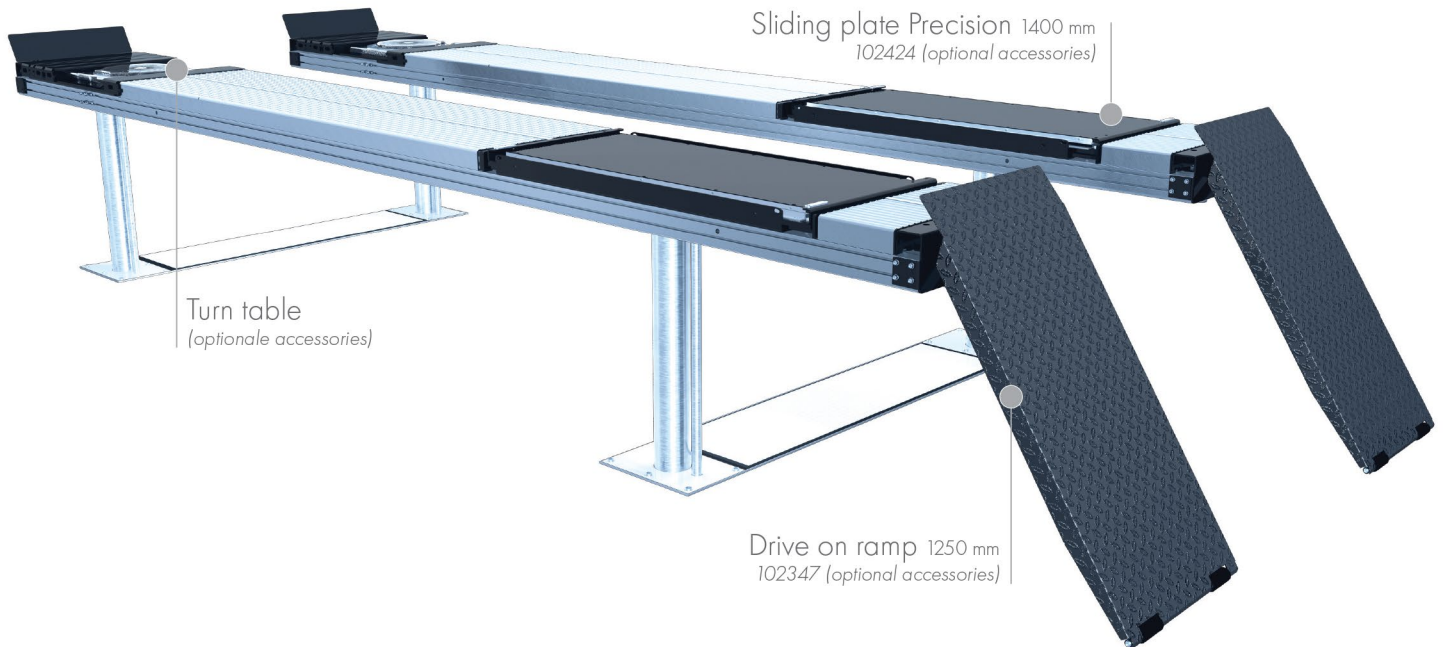


## SURFACE MOUNTED



## TECHNICAL DATA

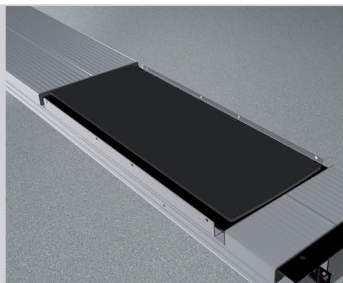
capacity	6500 kg
effect. raise height	2008 mm
platform length	5500 mm
platform height	180 mm
piston diameter	123 mm
piston distance	1550 mm
installation depth	2443 mm
motor output	3,0 kW
power connector	400 V/16 A
cable length to control	11 m
lifting time	≈ 35 sec.
lowering time	≈ 35 sec.

Platform support Alu Track 4.65	108619
with platform notches for turn tables and sliding plates	
Platform support Alu Track 4.65	108618
with platform notches for joint play tester	
Platform support Alu Track 4.65	108617
Installation cassettes STEEL 1550 mm	2420XX
Installation cassettes STEEL 1550 mm galvanized	2421XX
Lifting unit oil 6,5 t 1550 mm - K pre-assembled in installation cassette	111609
Lifting unit oil 6,5 t 1550 mm - H packed in wooden box	111610

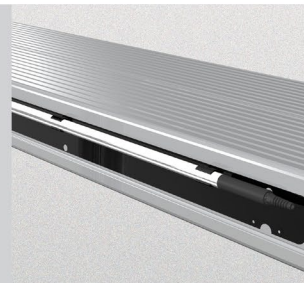
ACCESSORIES



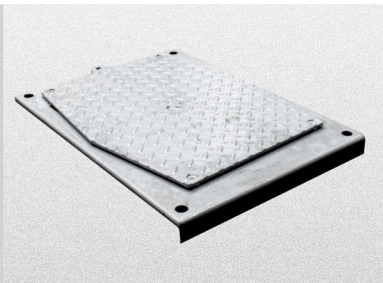
Drive on ramp  
1250 mm  
102347



Sliding plate  
Precision 1400 mm  
102424



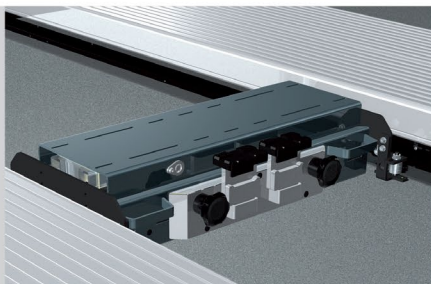
Lighting  
LED  
111598



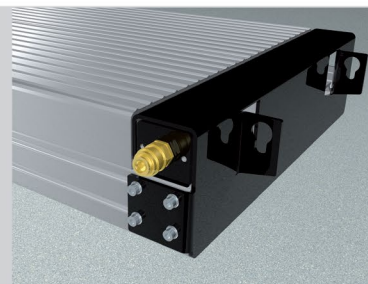
Joint play tester  
108613



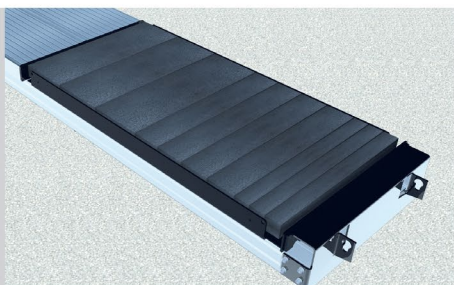
Slide rail  
5500 mm  
102376



Axle lifter 2600 kg  
pneumatic, without slide rails  
105063



Compressed air supply  
105617



Rubber elements  
50 mm      100 mm      200 mm  
111677      111678      111679