



BULLWORTHY

THE GARAGE EQUIPMENT SPECIALISTS

TREADSPEC 2.0

DRIVE OVER DIAGNOSTICS



TTECHNIQUE



tSCAN

WHY TREADSPEC?

TreadSpec allows tyre retailers and their customers to easily and quickly understand the wear condition of tyres. It saves time, avoids errors and provides sales opportunities for replacement tyres and wheel alignments.

FIVE REASONS YOU SHOULD USE TREADSPEC

- ✓ **Fast** - Five second cycle time.
- ✓ **Automated** - No manual errors or missed tyres.
- ✓ **Accurate** - Scans hundreds of points across each tyre.
- ✓ **Convenient** - Capture 100% of vehicles entering workshop.
- ✓ **Transparent** - A full TreadSpec report available within seconds.

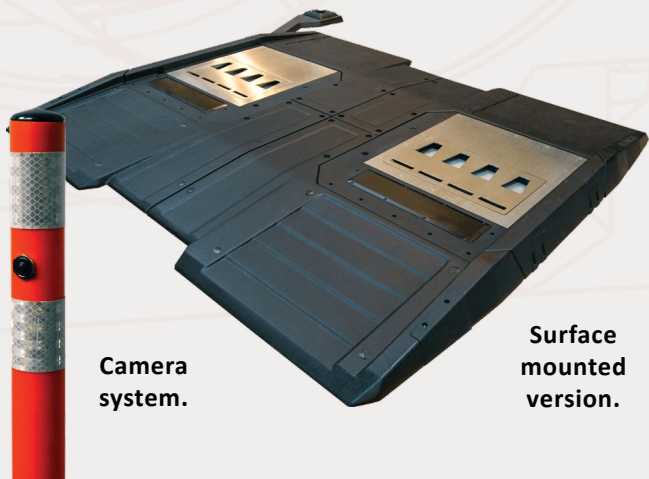
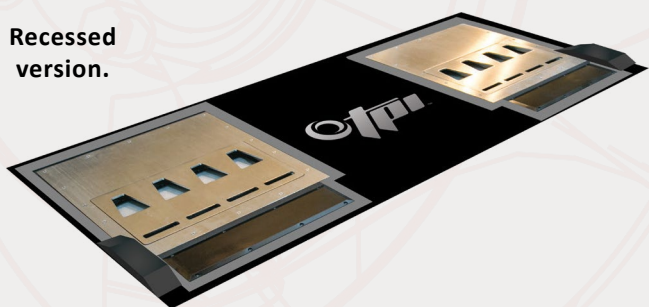


TREADSPEC 2.0 - AUTOMATIC DRIVE OVER TYRE INSPECTION



SCAN THE QR CODE TO WATCH OUR DEMONSTRATION VIDEO VIA OUR YOUTUBE CHANNEL!

Recessed version.



Camera system.

Surface mounted version.

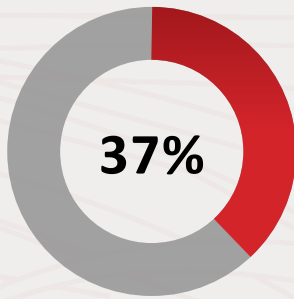
SCAN, DIAGNOSE, ENGAGE, SELL.

This easy-to-use, touchless solution scans all the tyres on a vehicle as it drives over the device. The scanner is constructed of stainless steel for corrosion resistance and scans are accurate to -0.2 mm even if tyres are wet or dirty.

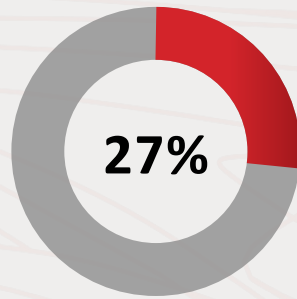
Uneven tyre wear and edge-to-edge tread depths are calculated and displayed in an easy to understand, colour coded graphical report. The whole process takes less than 5 seconds. TreadSpec 2.0 can be easily integrated into existing touchless and eVHC inspection processes using a simple API.

The solution builds customer trust to maximise sales of replacement tyres and wheel alignments.

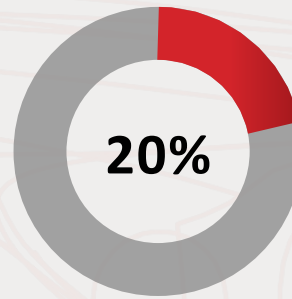
MORE REASONS TO USE TREADSPEC.



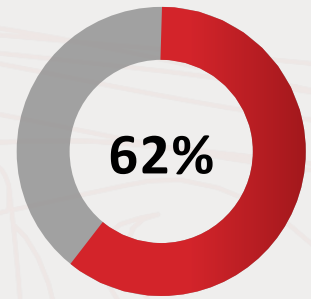
Of accidents that are due to vehicle fault, are caused by vehicles with dangerously worn tyres.



Of vehicles on our roads have at least one tyre which is not in safe.

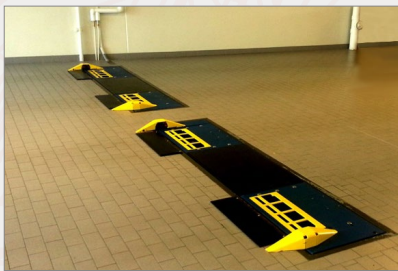


Of drivers never check the condition of their tyres.



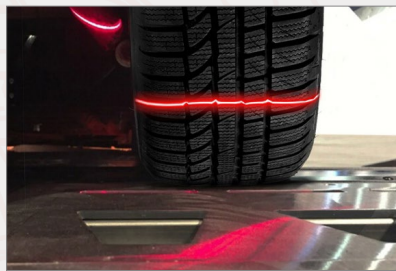
Of drivers are unaware they can be fined for each dangerous tyre found on their vehicle.

HOW DOES TREADSPEC WORK?



STEP 1

Drive over the ramp at normal speed. An additional camera captures the license plate.



STEP 2

Analysis of the laser scan diagnoses tread depths across the entire tyre and the need for a wheel re-alignment.



STEP 3

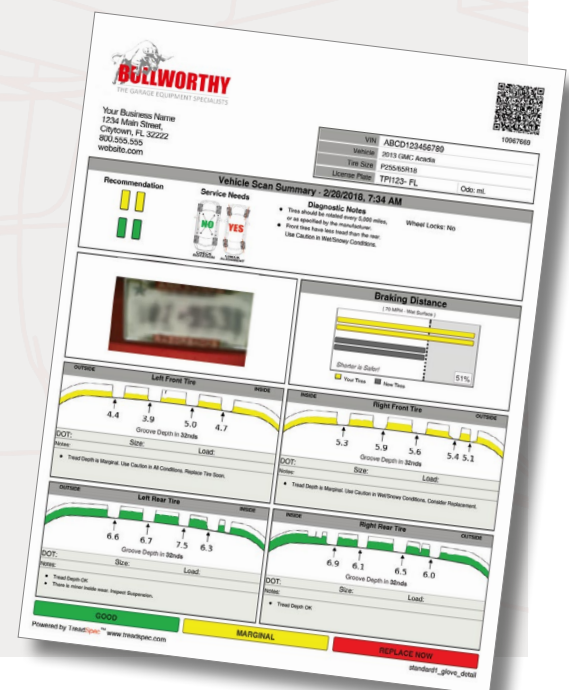
Share the TreadSpec report, available in seconds, with the customer to agree the purchase of replacement tyres and alignments.

THE TREADSPEC REPORT.

Cloud based software receives data from the TreadSpec device which is connected via the Internet.

The report allows the customer to easily understand the condition of their tyres and includes:

- ✓ **Vehicle registration number.**
- ✓ **A traffic light warning system for the tread depth.**
- ✓ **The impact on the vehicle's stopping distance.**
- ✓ **Recommendations for tyre replacement and alignment.**



NEED **ALIGNMENT?**
WE'LL SET YOU
STRAIGHT...

TTECHNIQUE



THE GARAGE EQUIPMENT SPECIALISTS

MAIN OFFICE: UNIT 7, MANOR BUSINESS PARK, WOODFORD HALSE, NORTHAMPTONSHIRE, NN11 3UB.



(01295) 768373



enquiries@bullworthy.co.uk



www.bullworthy.co.uk